



# AQUATIC WEED REMOVAL

Bryan Barrett, Nicole Fletcher, Autumn Pratt, Stephen Walters, Sarah Willis

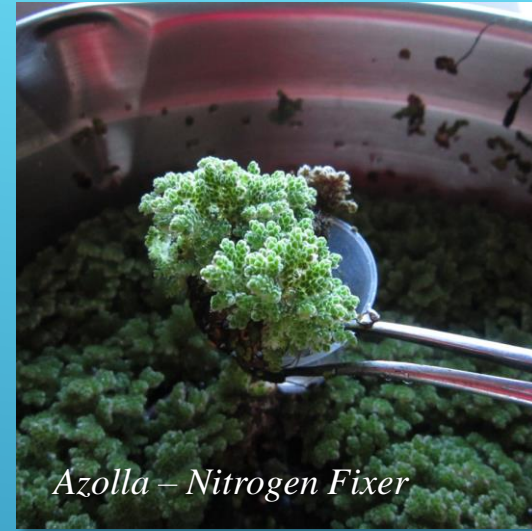
SUPPORTED BY UI ARBORETUM ASSOCIATES

# PROBLEM – ARBORETUM PONDS

Weed  
Overgrowth



Eutrophication  
(Nutrient Buildup)



TYPES: *Azolla*, duckweed, water meal

CONSISTENCY: Floating, granular

COMPOUNDING FACTOR: Nitrogen Fixing

# NEEDS/SPECIFICATIONS



## PROBLEMS:


- Unreliable
- Expensive
- Labor intensive
- Harmful to other pond life



What didn't  
work.

What's  
needed:

- Low-labor (comparatively)
- Low-weight
- Safe
- Improve pond health (preferred)

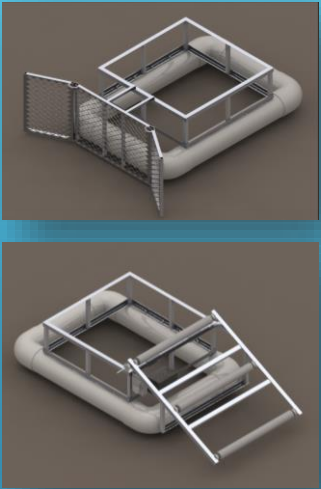
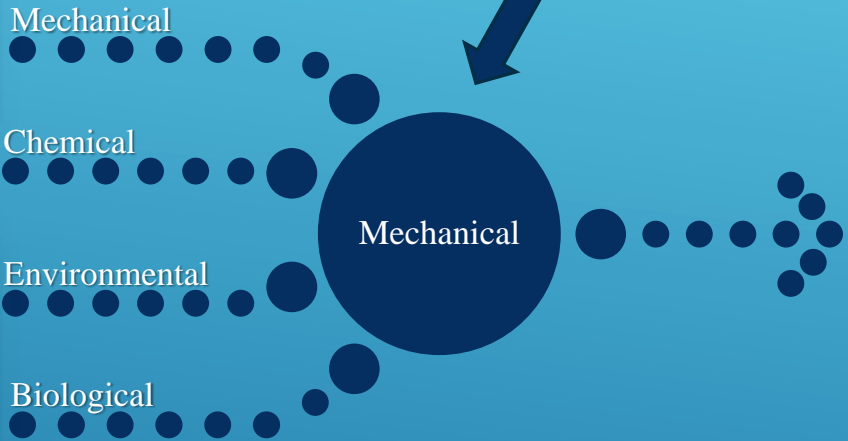


Need	Spec
Labor	8 man-hours per week (or less)
Maneuverability	Movable by 1-2 people (no component more than 100 lb)
Cost	Under \$15,000

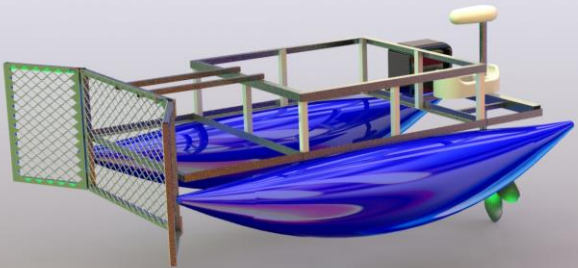
# DESIGN DECISIONS



*Arboretum Associates Input*

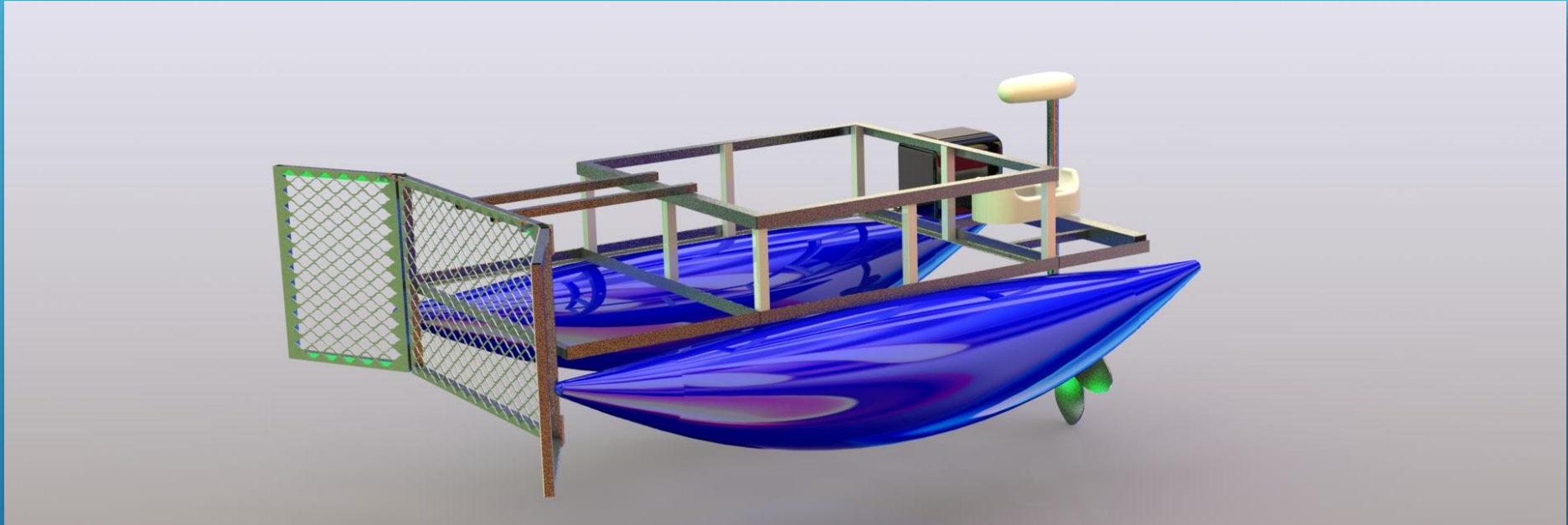


*Final Design*



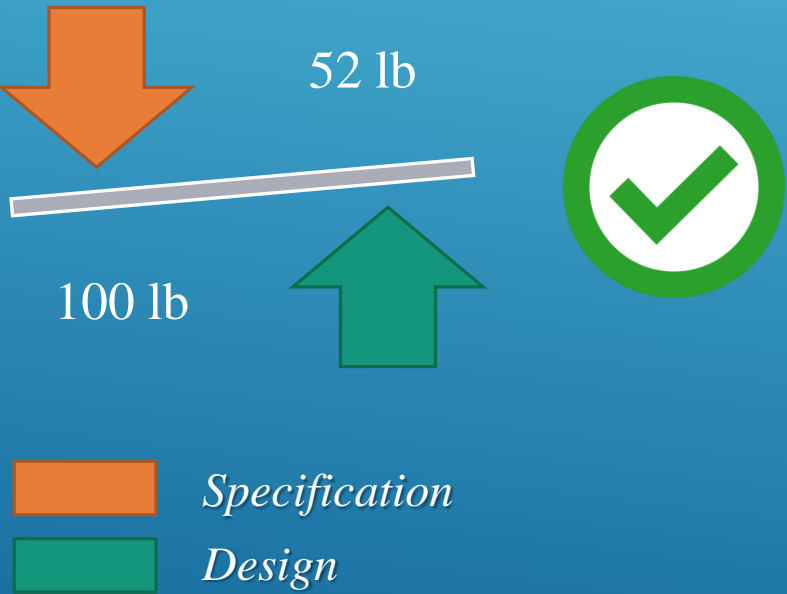


# FINAL DESIGN FOR PROTOTYPE

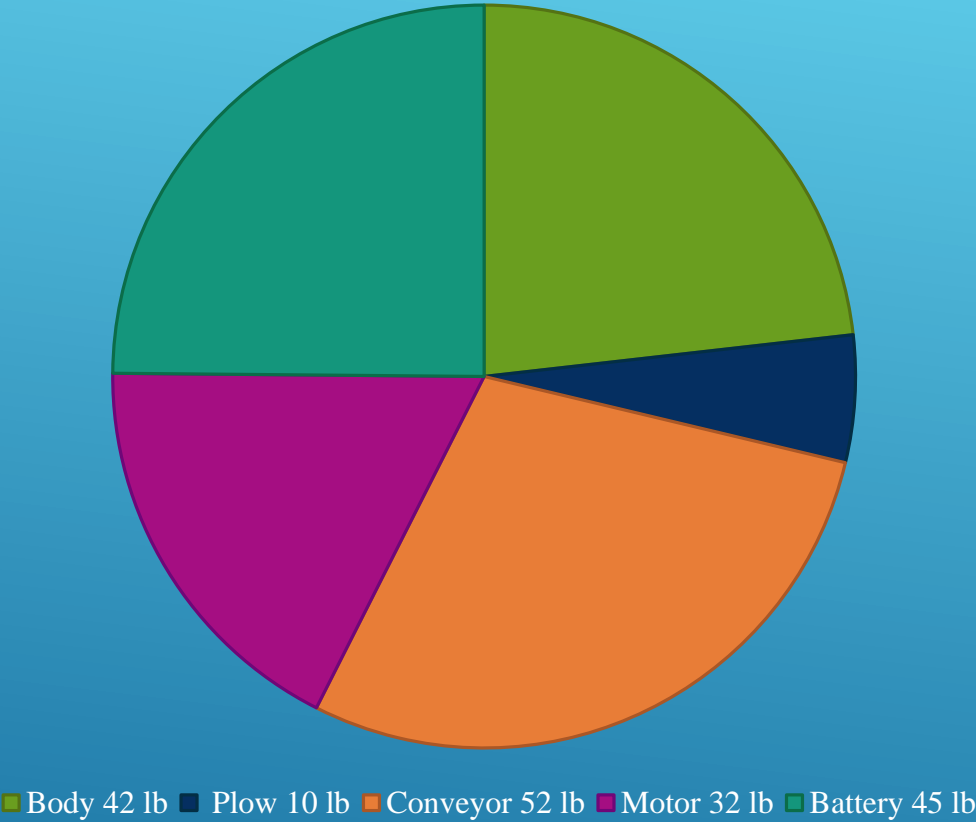


# DESIGN EVALUATION: WEIGHT

*Heaviest Component  
(compared with requirement):*

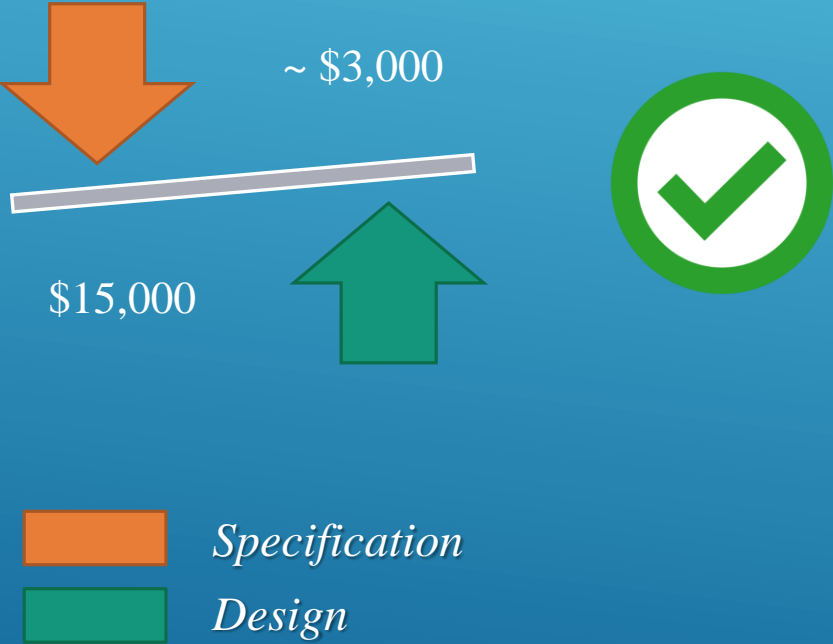


Component Weights

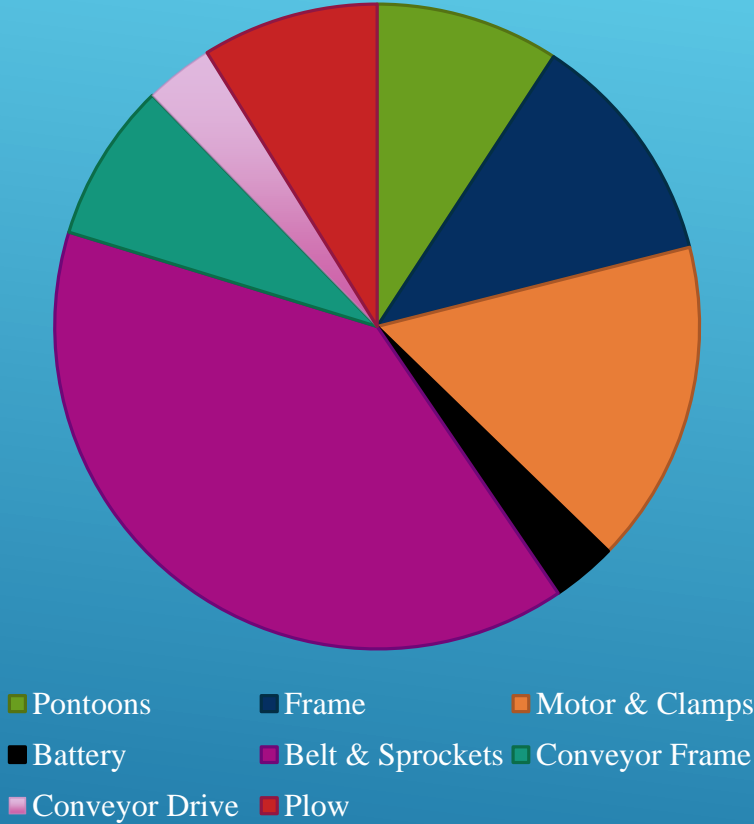


# DESIGN EVALUATION: COSTS

*Cost (compared with requirements):*

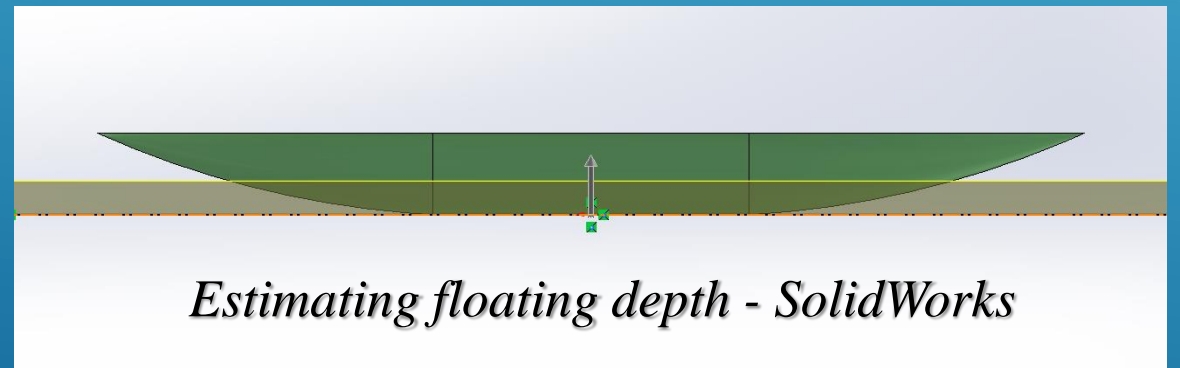
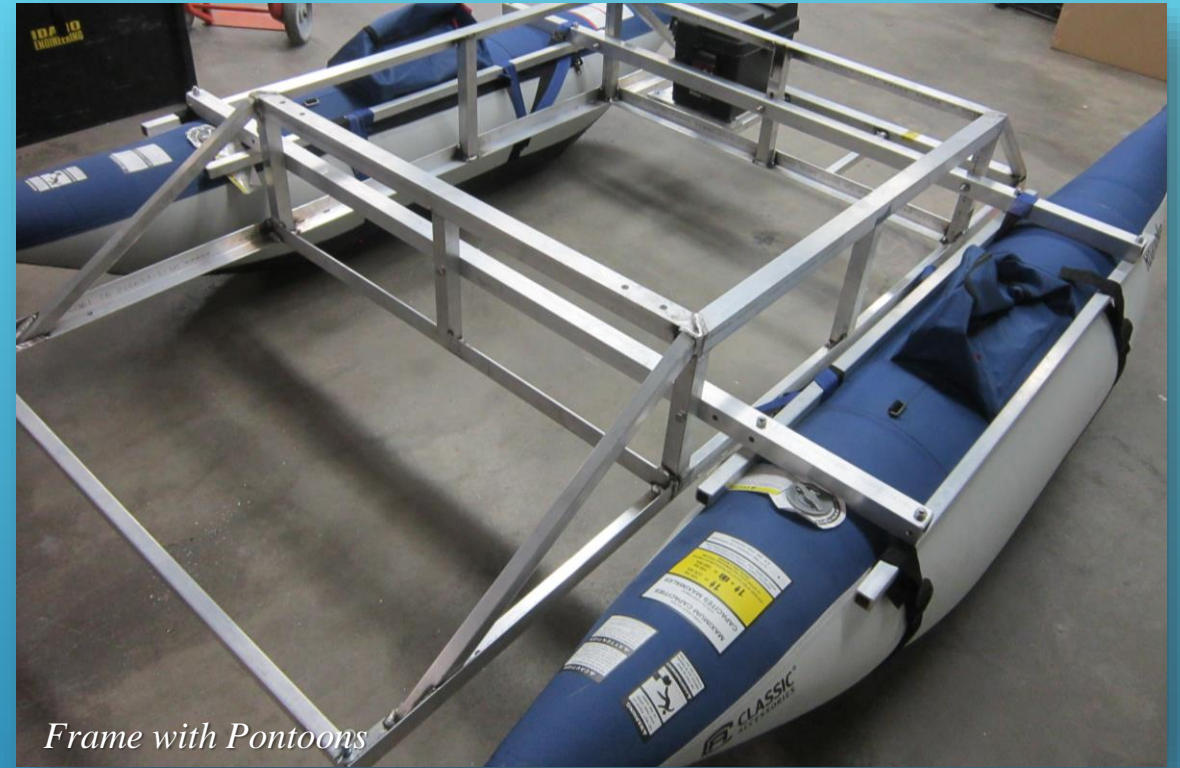


Component Cost Proportions



*Cost of final design does not include all shipping etc. or PVC. Full accounting will be provided in Final Report. Spending leaves plenty of room for on shore conveyor & RC improvements.*

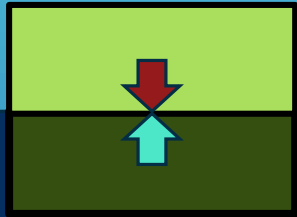
# DETAIL: BODY & MOTOR





# DETAIL: BODY & MOTOR

## WEED COLLECTION:



*Weeds self-support*

*Weeds support their own weight in water – basket removed under boat for convenience.*

*Azolla ~ 17 lb/ft<sup>3</sup>. Keep in mind when filling basket.*



*Basket opening: 42"x42"*

## MOTOR & CONNECTION:



*Conversion Clamps*



*Battery Connection*



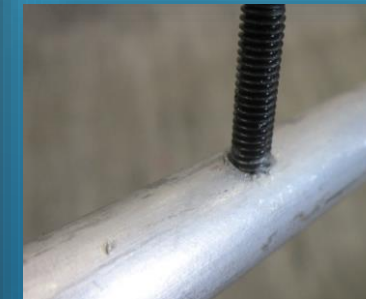
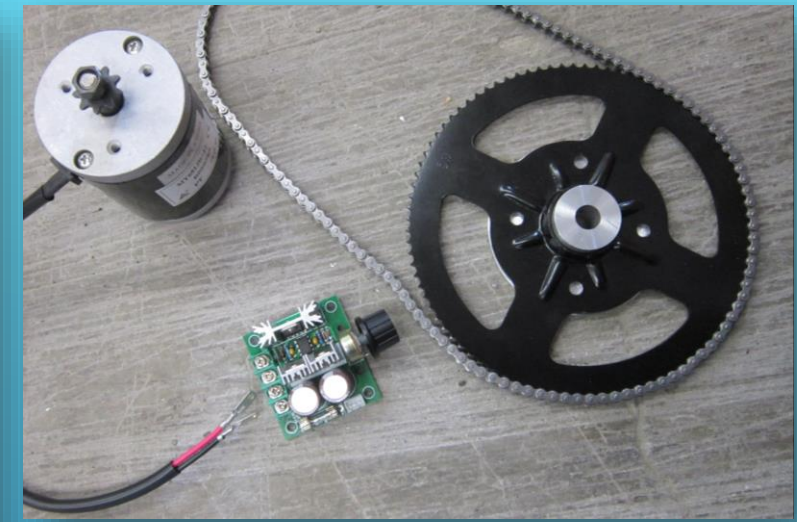
*Cayman Haswing Trolling Motor*

# DETAIL: PLOW





*Conveyor Frame*

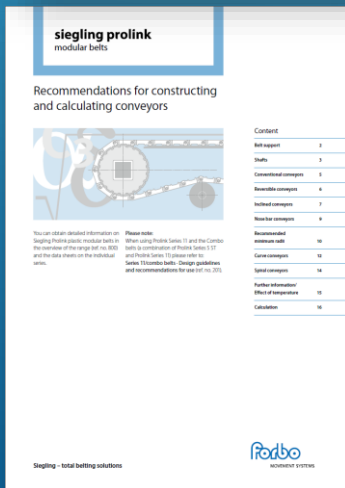


*Drive System* ↑  
← *Belt*



## Densities and coefficients from Forbo, plus:

Belt Speed	65 ft/min
Axle Distance	4 ft
Azolla Density	17 lb/ft <sup>3</sup>





# CONSTRUCTION OVERVIEW:

*With a few exceptions, large-scale simple design. Easy to modify.*



*Sewing Straps*



*Milling Holes*

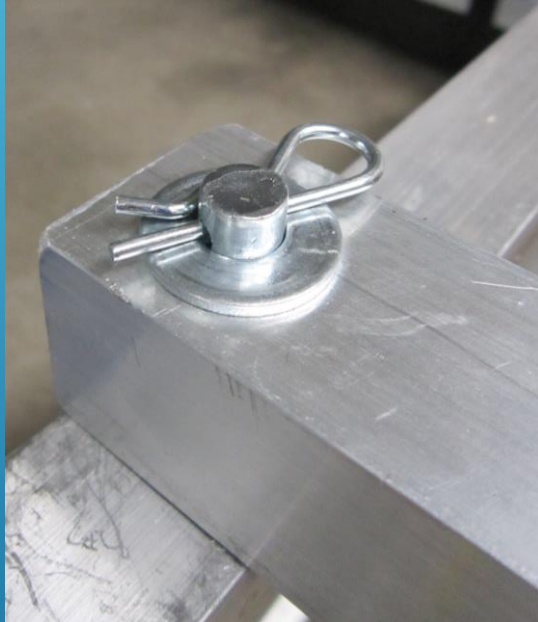


*Pontoon Attachments*



# RECOMMENDATIONS/CONTINUING WORK

## RECOMMENDATIONS FOR USE:



*Plow Connections*

- *Attachments easily removable with cotter pin – not recommended to transport assembled*
- *Operate with tether until RC connection is reliable*
- *Allow to dry after use*
- *Oil conveyor drive chain periodically*

## FUTURE WORK:



*Motor Remote*

- *Remote Extension*
- *Integration of kill switch & conveyor controls*
- *Automate plow*
- *Keep looking into larger solutions\**

QUESTIONS?